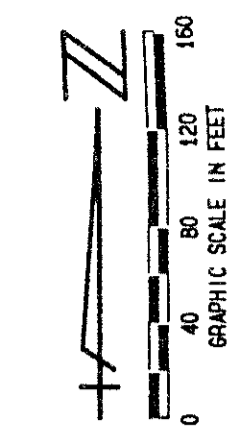


ADDISON RESERVE PLAT ONE

PART OF THE GLENEAGLES/POLO CLUB WEST P. U. D.
SITUATE IN SECTIONS 27 AND 28, TOWNSHIP 46 SOUTH, RANGE 42 EAST
PALM BEACH COUNTY, FLORIDA
FEBRUARY, 1995
SHEET 6 OF 6

148

STATE OF FLORIDA
COUNTY OF PALM BEACH
THIS PLAT WAS FILED FOR
RECORD _____ DAY OF
A.D. 1995 AND DULY RECORDED
IN PLAT BOOK _____ ON PAGES
_____ AND _____
DOROTHY H. WILKEN, CLERK
BY: _____, D.C.

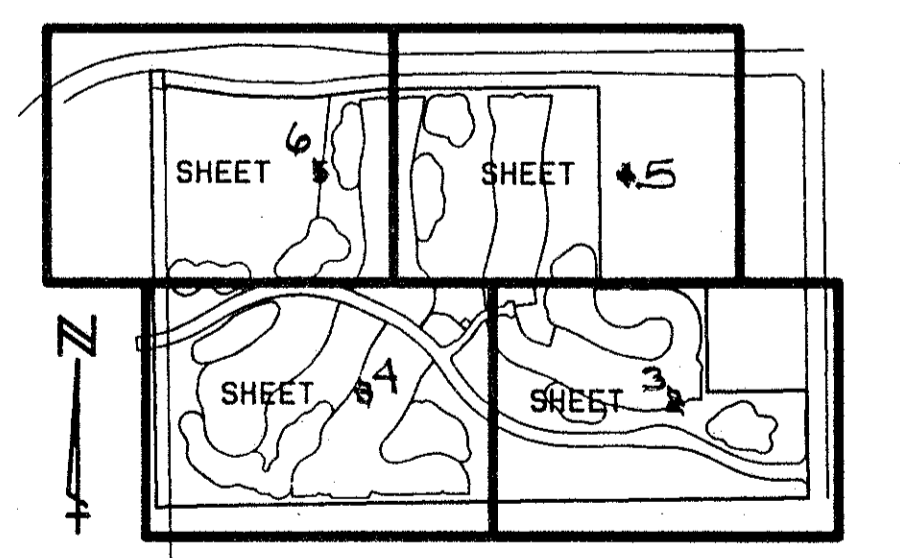


CIRCUIT COURT SEAL

*PET. 90-215H
5/3/3/K*

- LEGEND:**
- L. W. D. D. LAKE WORTH DRAINAGE DISTRICT
 - FPL FLORIDA POWER & LIGHT
 - ORB OFFICIAL RECORD BOOK
 - PBCD PALM BEACH COUNTY
 - PRM PERMANENT REFERENCE MONUMENT
 - P.B. PLAT BOOK
 - Pp. PAGES
 - PG. PAGE
 - U. E. UTILITY EASEMENT
 - D. E. DRAINAGE EASEMENT
 - A. E. ACCESS EASEMENT AND MAINTENANCE EASEMENT
 - TWP. TOWNSHIP
 - RGE. RANGE
 - (NR) NON RADIAL
 - C/L CENTERLINE
 - PERMANENT CONTROL POINT
 - PERMANENT REFERENCE MONUMENT
 - SET PL. 4763 PERMANENT REFERENCE MONUMENT FOUND
 - L. W. A. E. LAKE MAINTENANCE ACCESS EASEMENT
 - L. M. E. LAKE MAINTENANCE EASEMENT
 - R/W. RIGHT OF WAY
 - EASE. EASEMENT
 - PUD. PLANNED UNIT DEVELOPMENT
 - D. E. DRAINAGE EASEMENT
 - L. A. E. LIMITED ACCESS EASEMENT

COORDINATE NOTE:
ALL DISTANCES ARE GROUND
SCALE FACTOR = 1.0000242
N89°19'27"E (Plat) = 00°00'07" Bearing
Clockwise Rotation
N89°19'34"E (Grid) (Plat to Grid)
North line of the NW 1/4
Section 27-46-42
Basis of Bearing
COORDINATES SHOWN ARE GRID
DATUM = NAD 83 1990 ADJUSTMENT
ZONE = FLORIDA EAST
LINEAR UNIT = US SURVEY FEET
COORDINATE SYSTEM 1983 STATE PLANE
TRAVERSE MERCATOR PROJECTION
GROUND DISTANCE X SCALE FACTOR = GRID



SHEET LOCATION MAP
NOT TO SCALE

0230-013

THIS INSTRUMENT WAS PREPARED BY MARY HANNA CLOFFELTER, P.L.S. IN THE OFFICES OF MOCK, ROOS & ASSOCIATES, INC., 5720 CORPORATE WAY, WEST PALM BEACH, FLORIDA 33407.

75/148

MOCK, ROOS & ASSOCIATES, INC.
5720 CORPORATE WAY, WEST PALM BEACH, FL 33407 (407) 683-3113
SCALE: 1"=80' DATE: FEBRUARY 1995
P.A. NO. 94182.00 DWG. NO. 46-42-27-33
ADDISON RESERVE PLAT ONE
PART OF "GLENEAGLES/POLO CLUB WEST, P. U. D."
SECTIONS 27 & 28, TOWNSHIP 46 SOUTH,
RANGE 42 EAST

GLENEAGLES PLAT EIGHT
P.B. 54, 114-117

UNPLATTED

KINGS POINT PLAT NO. ONE
P. B. 29 PGS. 138

LINTON BOULEVARD

L. W. D. D. L-36 CANAL (90° R/W)

TRACT O

L. W. D. D. E 2 1/2 CANAL

TRACT H

TRACT 3
(TO BE REPLATTED
PRIOR TO
SUBDIVIDING)

TRACT F

TRACT L-7

TRACT LK-7
WATER MANAGEMENT
TO BE MAINTAINED BY
ADDISON RESERVE MASTER
PROPERTY OWNERS ASSOC., INC.

TRACT LK-8
WATER MANAGEMENT
TO BE MAINTAINED BY
ADDISON RESERVE MASTER
PROPERTY OWNERS ASSOC., INC.

TRACT LK-9
WATER MANAGEMENT
TO BE MAINTAINED BY
ADDISON RESERVE MASTER
PROPERTY OWNERS ASSOC., INC.

TRACT LK-10
WATER MANAGEMENT
TO BE MAINTAINED BY
ADDISON RESERVE MASTER
PROPERTY OWNERS ASSOC., INC.

ADDISON RESERVE BOULEVARD

SUBDIVISION * Addison Reserve Platon
BOOK 75 PAGE 148 FLOOD MAP #215A
QUAD # 52.37 ZONING RTS
SE 80-215 ZIP CODE 33446
PUD NAME Gleneagles Polo Club West 27,28,46,47

TAZ-477

REV. 5-04-95
REV. 5-23-95
REV. 5-17-95
REV. 5-07-95
CADD FILE
TWKCRP09

MATCH LINE SEE SHEET 5 OF 6

